



# **KIMATSU INDIA PRIVATE LIMITED**

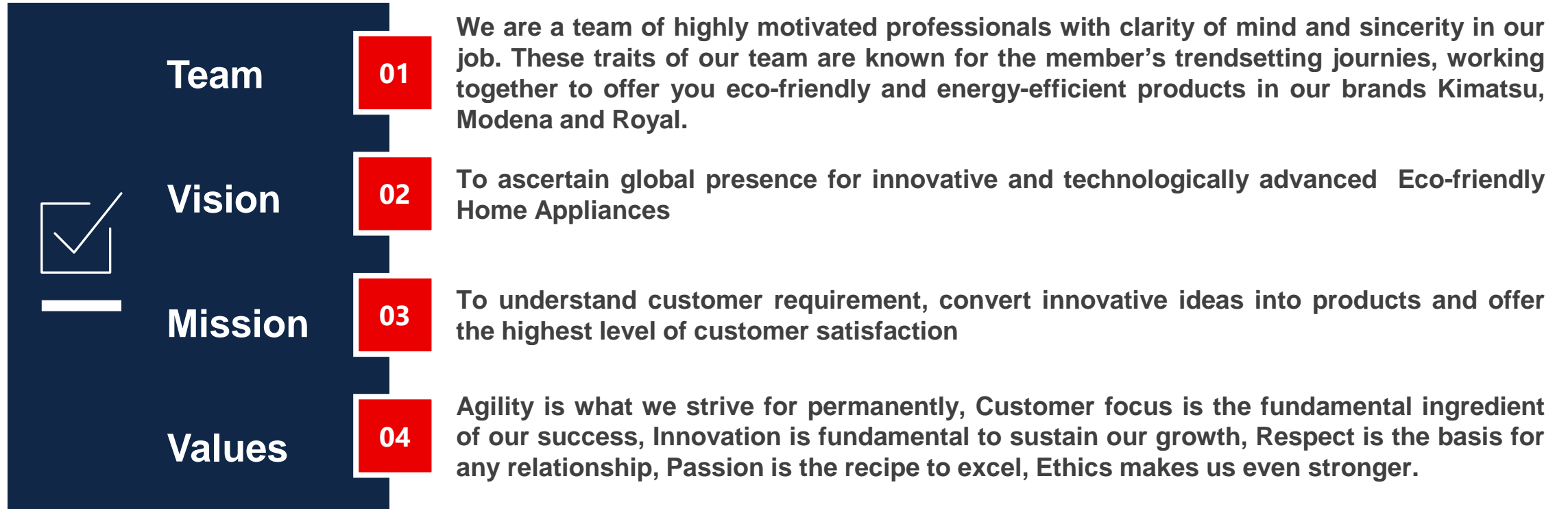
---

*Sure Sign of Expertise*

# KBC Group

- **KIMATSU**, a fast-growing home appliances company in India, is well known in the Middle East, Asia and Africa. We specialize in an innovative range of Gas Stoves and other appliances such as Mixer Grinders, Air Conditioners, Evaporative Air Coolers, Water Dispensers & others Cooling Appliances. Our products are approved and certified by major international certification authorities for safety and reliability.
- We are committed to achieving competitive excellence & offer 5 Ps of Marketing with an uncompromising level of service & support. Let us help you discover & experience our wide range of appliances, which are available at over 250 megastores.
- The brand was conceptualized and founded in the year 1998 with an expertise in cooling appliances. Today, it's a well-known brand for its innovative technology, designs, excellent quality and unmatched reliability.
- KIMATSU stands for 'Duty First'. We believe in 'Duty with Passion' to ensure customer satisfaction and committed value-added services. Within a short span of 16 years, we have earned trust and respect of our valued dealers and distributors across the globe.

# Company Overview



# Value Proposition

## Infrastructure

End-to-end manufacturing facilities,  
R&D, technical know-how and  
capabilities



## Manufacturing Expertise

Strong manufacturing expertise of  
16+ years, with a highly efficient  
team guided by strong leadership



## Well-connected Network

Strong domestic & overseas  
network of suppliers, customers &  
industry experts



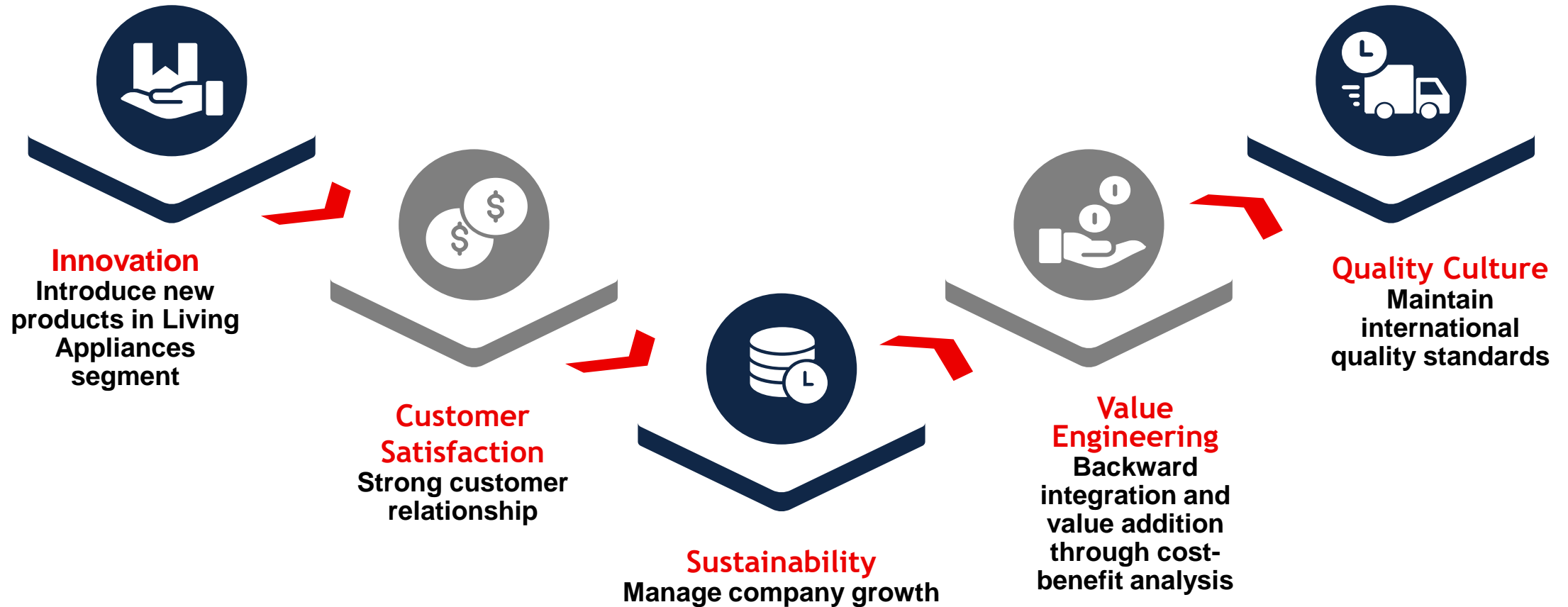
## ODM Expertise

Differ from typical job work  
companies, as focus is around  
conceptualization & end-to-end  
product design



# Company Culture

‘At Kimatsu Appliances it is our goal to achieve profitable annual sales without compromising product quality or company integrity’



# Unique Selling Proposition

1

Blue-chip customer  
base



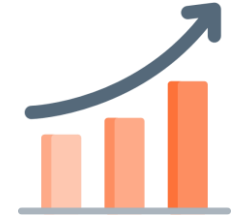
2

One of the largest  
Motor manufacturer in  
India



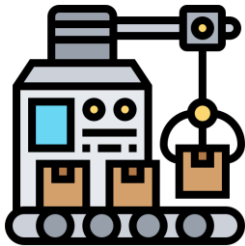
3

Vertically integrated  
business with large  
volumes



4

State of the art  
manufacturing unit



5

India's one of the  
leading Mixer  
brand



6

Extensive product  
range



# The Team (Our Core Strength)

**Managerial Staff**

11%

**Engineering Graduates**

22%

**Quality / Technical Staff**

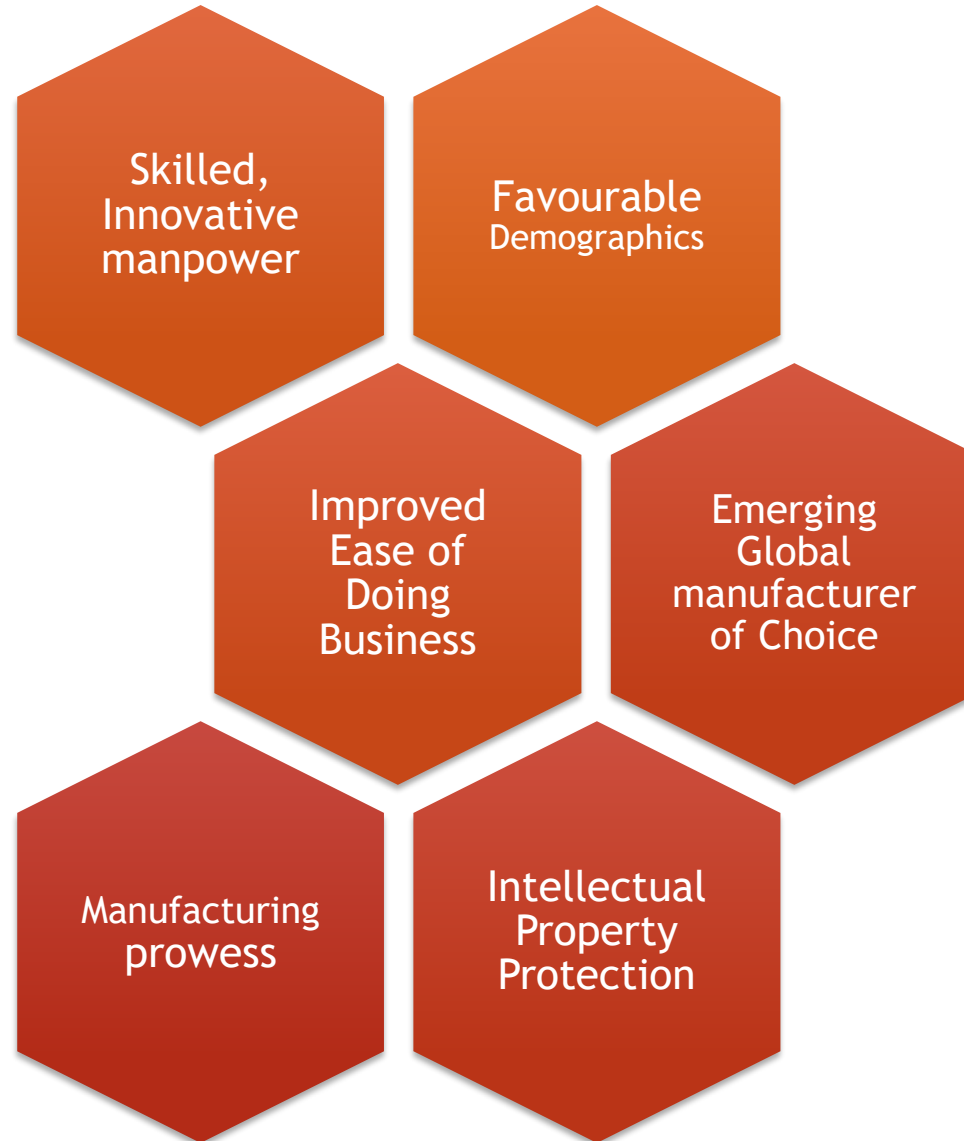
49%

**Post Graduates**

18%

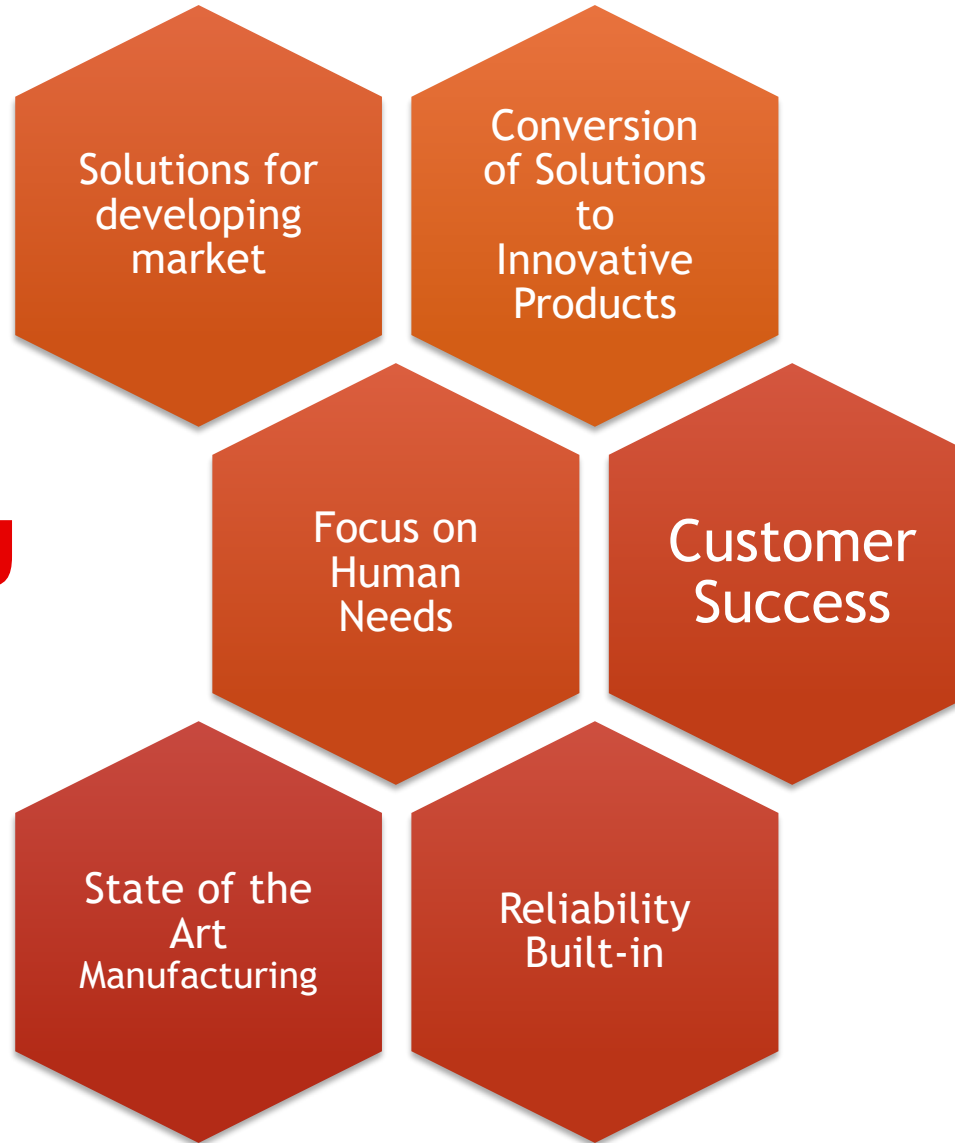


# Why India





# WHY KIMATSU



# Manufacturing Facility

- ▶ India's largest OEM in Home Appliances (Air Conditioner, Induction Cooktop and other Kitchen Appliances)
- ▶ State-of-the-art plant & machinery to meet stringent quality norms of MNC's spread across an area of 12 acres
- ▶ Manufacturing facilities in excise free zones at Dehradun, India
- ▶ Kimatsu has an installed capacity to manufacture 15,00,000 AC's, 2,00,000 Water Dispenser, 1,200,000 Cook-Top and 3,60,000 Mixer Grinder per annum
- ▶ The group has been able to gain the confidence of customers through its professional approach and customer driven culture

## Large appliances

- ▶ Room Air conditioner: Window Type & Split Type
- ▶ Air Coolers
- ▶ Water Dispenser: Table Top & Floor Standing Type
- ▶ Chest Freezers

## Small home appliances

- ▶ Gas Stoves
- ▶ Mixer Grinder
- ▶ Ceiling Fans

## BLDC CEILING FAN



## Highlights of BLDC Ceiling Fan

- ABS Plastic False Bottom Cover Ceiling Fan
- Aluminium Top Cover – 235 mm
- Aluminium Skeleton Bottom Cover.
- Motor : 16 Pole and 16 mm – Prime Lamination with Decarbonization Process.
- 100% Copper – Approx 260 gms.
- Life of the Motor – Minimum 10 Years
- Blade Material – GPSP (Galvanized MS Sheet For Rust Free Life)
- Down Rod – 12 Inch
- Regulator – Box Type Electronic Regulator
- Special Feature : Safety Wire 900mm as per IEC Standard.
- Packing :
  - Motor : Packing: One X One Packed In Thermocol with all other accessories
  - Blade : 2 Set Blade Packed In White Blade Box With Higher GSM And BF Corrugated Paper
  - Master Box : 2 Fans And 2 Set Blades Packed In Multi Color Outer Carton with Made of higher GSM / BF corrugated craft paper.

# CEILING FAN



**TYPHPOON**

Model  
**Typhoon**

Sweep  
**1200 mm, 1400 mm**

Colors  
**White, Metallic**

Container Qty  
**40 HQ-2800,  
20 Ft-1400**



**SUPREME**

Model  
**Supreme**

Sweep  
**1200 mm, 1400 mm**

Colors  
**White, Ivory**

Container Qty  
**40 HQ- 4200 Pcs  
20 Ft - 2000 Pcs**

# CEILING FAN

JANSI



Model  
**Jansi**

Sweep  
**1200 mm, 1400 mm**

Colors  
**White, Metallic**

Container Qty  
**40 HQ-2900**  
**20 Ft-1400**

BREEZE



Model  
**Breeze**

Sweep  
**1200 mm, 1400 mm**

Colors  
**White, Ivory**

Container Qty  
**40 HQ- 4900 Pcs**  
**20 Ft - 1400 Pcs**

# CEILING FAN

## TITANIUM



Model  
**Titanium**

Sweep  
**1200 mm, 1400 mm**

Colors  
**White, Metallic**

Container Qty  
**40 HQ -2900 Pcs**  
**20 Ft -1400 Pcs**

## VIVA



Model  
**Viva**

Sweep  
**1200 mm, 1400 mm**

Colors  
**White, Ivery**

Container Qty  
**40 HQ- 4200 Pcs**  
**20 Ft - 2000 Pcs**

# Kimatsu India Private Limited



## Email

[sales@kimatsu.com](mailto:sales@kimatsu.com)



## Phone

+91-9819845533 +91-9920486264  
+91-9619909297



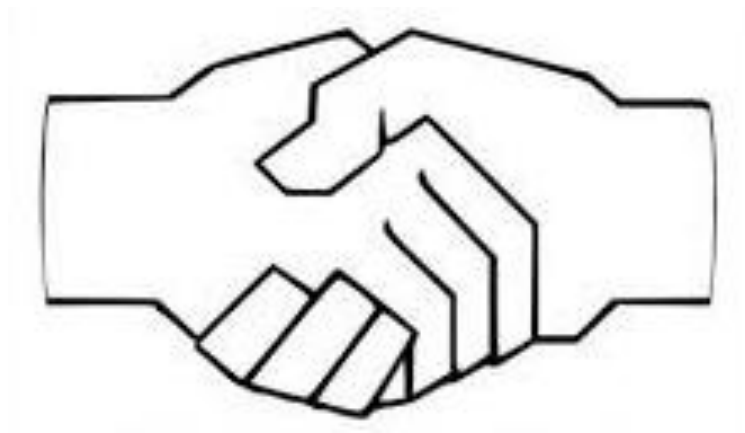
## Website

[www.kimatsu.com](http://www.kimatsu.com)  
[www.aircoolersindia.in](http://www.aircoolersindia.in)



## Address

201-202, Tirupati Udyog, I.B. Patel Road,  
Goregaon East, Mumbai-400063



**Thank You**